

GeneScan™ - 600 LIZ® Size Standard



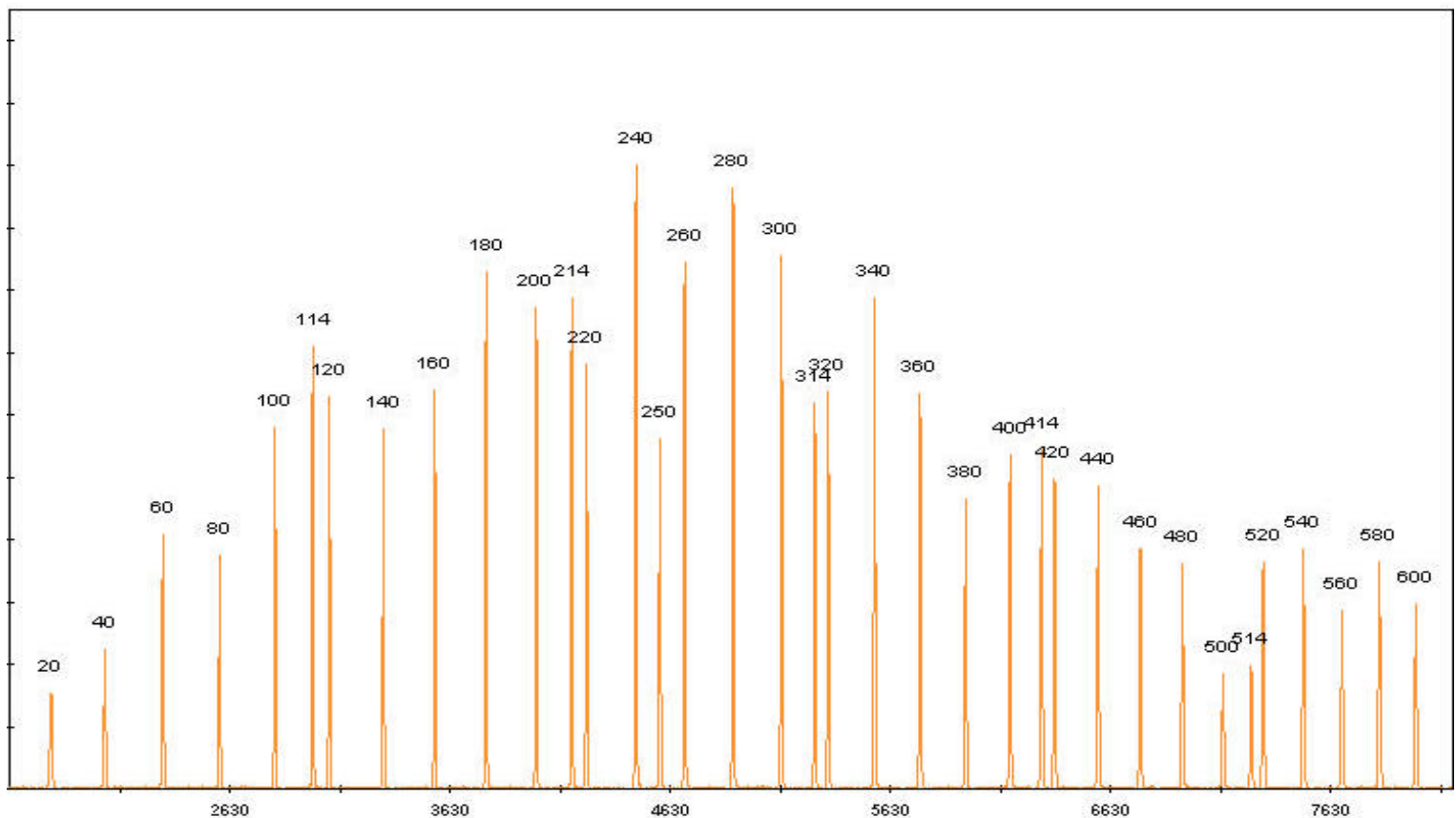
Product P/N 4366589
Insert P/N 4366591 REV C
Printed in USA

For Research Use Only.
Not for use in diagnostic procedures.

GeneScan™ - 600 LIZ® is an internal lane size standard developed for use with the Applied Biosystems fluorescence-based DNA electrophoresis systems. The use of an internal lane size standard enables automated data analysis and assists in achieving high run to run precision in sizing DNA fragments by electrophoresis. GeneScan™ - 600 LIZ® Size Standard is designed for sizing DNA fragments in the 20-600 bp range and provides 36 single-stranded labeled fragments of 20, 40, 60, 80, 100, 114, 120, 140, 160, 180, 200, 214, 220, 240, 250, 260, 280, 300, 314, 320, 340, 360, 380, 400, 414, 420, 440, 460, 480, 500, 514, 520, 540, 560, 580, 600 bases. Each of the DNA fragments is labeled with a proprietary fluorophore, which results in a single peak when run under denaturing conditions. Shown below is a typical peak profile of the GeneScan™ - 600 LIZ® Size Standard run on an Applied Biosystems Genetic Analyzer.

Each kit contains two-200 µL tubes of the size standard. This is sufficient for 800 analyses when using the recommended loading amount of 0.5 µL. The kit may be stored up to six months at 2°C to 8°C. (Do not freeze).

Electropherogram of the GeneScan™ - 600 LIZ® Size Standard



Directions for Use

Sample Preparation

WARNING! CHEMICAL HAZARD. Hi-Di™ Formamide. Exposure causes eye, skin, and respiratory tract irritation. It is a possible developmental and birth defect hazard. Read the MSDS, and follow the handling instructions. Wear appropriate protective eyewear, clothing, and gloves.

- 1) Before use, mix the contents of each tube thoroughly and centrifuge briefly to collect the liquid at the bottom of the tube. Typical loading cocktails are described below.

| | 310 | 3130 and 3100 Series Systems | 3730 Series Systems |
|------------------|--------------|------------------------------|---------------------|
| Sample | 0.5 μ l | 0.5 μ l | 0.5 μ l |
| Size Standard | 0.5 μ l | 0.5 μ l | 0.5 μ l |
| Hi-Di™ Formamide | 11.0 μ l | 9.0 μ l | 9.0 μ l |

Note: Applied Biosystems highly recommends using the above ratios of DNA sample (PCR product) and size standard as a starting point only. Optimize these ratios if necessary, based on your experimental results.

The Hi-Di™ Formamide (4311320) is not included in the kit.

- 2) Heat the loading cocktail for 3 minutes at 95°C. Immediately chill on ice for a few minutes and load samples.
- 3) Run module adjustment:
 - a. 310: add 200 seconds to the run modules
 - b. 3100 and 3130 Series Systems: add 100 seconds to the run modules
 - c. 3730 Series System: the default run modules will collect 600 base pairs.
- 4) To download a GeneMapper® Software or GeneMapper® *ID* Software size standard definition file please go to www.appliedbiosystems.com and use the keyword GeneMapper.

NOTICE TO PURCHASER: DISCLAIMER OF LICENSE

This product is compatible with DNA sequencing or fragment analysis methods covered by patents owned or licensed by Applied Biosystems. No license under these patents to use these methods is conveyed expressly, by implication, or by estoppel. A license to use the DNA sequencing or fragment analysis methods for certain research and development activities is available from Applied Biosystems. Further information on purchasing licenses may be obtained by contacting the Director of Licensing, Applied Biosystems, 850 Lincoln Centre Drive, Foster City, California 94404, USA.

VENDOR INFORMATION, PRODUCT INSERT FULL SHEET

Insert P/N 4366591 REV C
Printed in USA



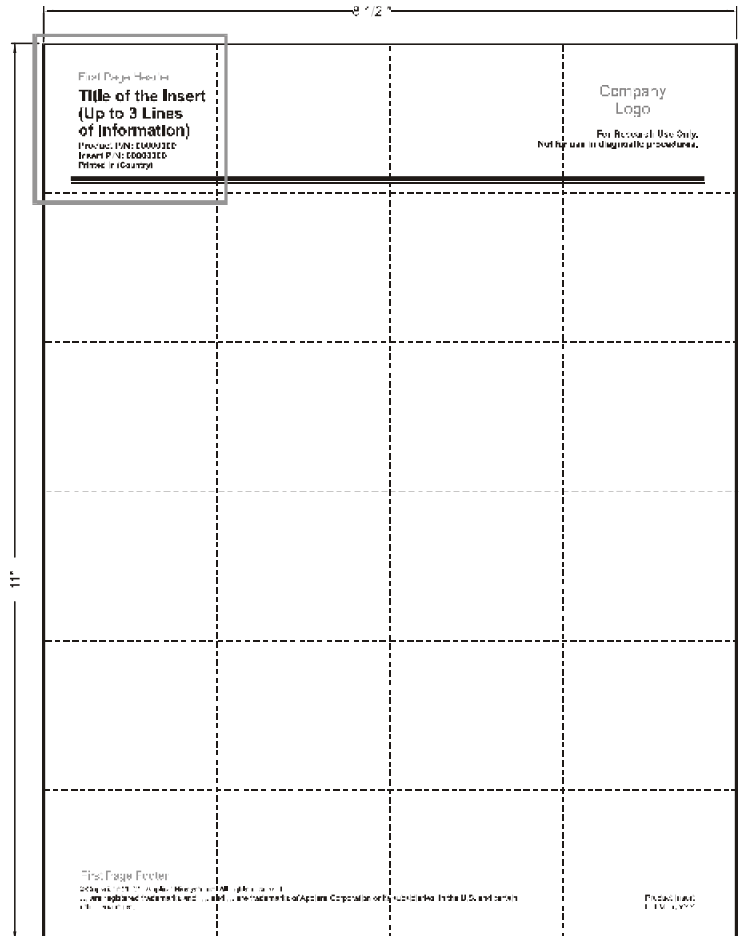
GUIDELINE, INSERT FOLD INSTRUCTIONS

- 1 Specification is intended for Full Sheet, two sheets max.
- 2 Material: 50# Offset (White)
- 3 Dimensions: Full Sheet (8 1/2" x 11") folded size = 1.833" x 2.125" +/- .125"
- 4 Two sheet inserts to have pages 2 and 3 facing each other.
- 5 After final folding, upper left-hand corner of page 1 is to face out, with title and part number displayed.
- 6 Folded inserts to be packaged as follows:
 - Bundled in groups of 10ea.
 - Shrink-wrap 10ea groups for 100 inserts total.
 - Label shrink-wrapped bundles [Part# & Rev (font large enough to be legible), Qty, Manufacturer, and Barcode Part #128C].
 - Seal shrink-wrapped bundles in an appropriately sized corrugated shipper (not to exceed 25#, or have outside dimensions greater than 12" x 13 1/2" x 24").
 - Appropriately label shipper [Part# & Rev (font large enough to be legible at 8 feet), Description, P.O.#, Qty, Mfg Date, Manufacturer, Country of Origin, and Barcode Part # in 128C] on at least one end panel (12" x 13 1/2" side).

NOTICE TO PRINTER

Print page(s) prior
to this page **ONLY**.

This page is
folding instructions
which is **NOT** and
MUST NOT BE PRINTED
as part of this insert.



THIS DOCUMENT CONTAINS PROPRIETARY INFORMATION
OF APPLIED BIOSYSTEMS AND IS TO BE RETAINED
IN CONFIDENCE, NOT TO BE REPRODUCED, COPIED,
OR INCORPORATED IN ANY MANNER.

© APPLIED BIOSYSTEMS 2005

4343196 REV B